

BALTIC PICK-UP BAND WEAVING

ON A 4-SHAFT LOOM



ELWYN KENN

BALTIC PICK-UP BAND

BALTIC THREADING - FLOWER BAND

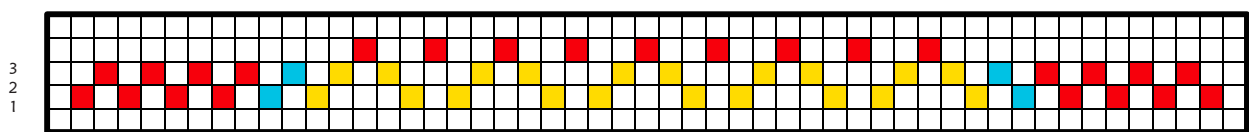
THREADING

The base structure is a variation of basket weave. The background threads are on Shaft 1 and Shaft 2. There are 2 background threads between each pattern thread.

The pattern threads are double the thickness of the background threads and are in Shaft 3.

The colours are threaded according to the chart. The pattern threads will need to have separate tensioning.

The weft is the same colour and thickness as the background warps or the edge warps.

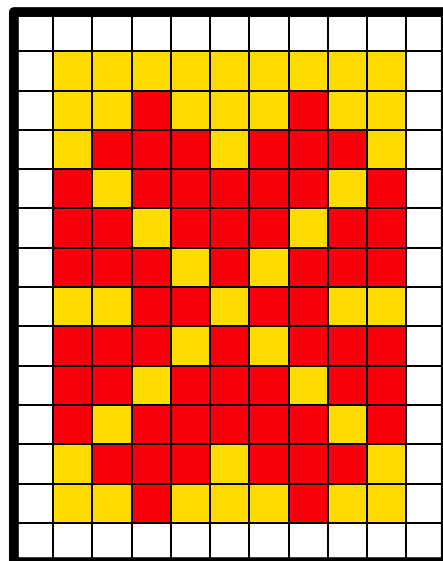


WEAVING

1. Raise Shaft 3 and beat gently. Using a stick pick up and drop down the pattern threads according to the chart. Hold the pattern threads then close Shaft 3. Raise shaft 1 and push the stick with the pattern threads back toward the heddles. Pass the weft from Left to Right through Shaft 1 and the picked up pattern threads from Shaft 3.

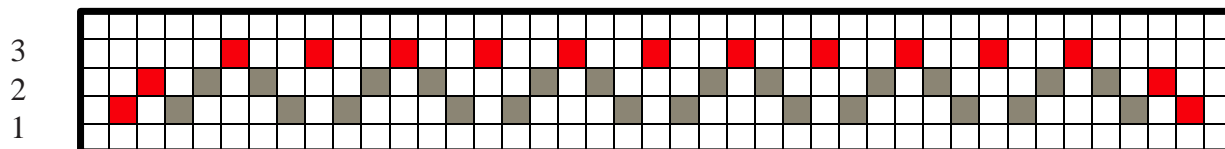
2. Raise Shaft 3. Beat then pick up and drop down the pattern threads for the next row on the chart. Hold the pattern threads then close Shaft 3. Raise Shaft 2 and push the pattern threads back toward the heddles. Pass the weft from Right to Left through Shaft 2 and the picked up pattern threads from Shaft 3.

Before passing the weft make sure that all the dropped threads are pushed well down.



BALTIC PICK-UP BAND

BALTIC THREADING - HALLINGDAL BAND

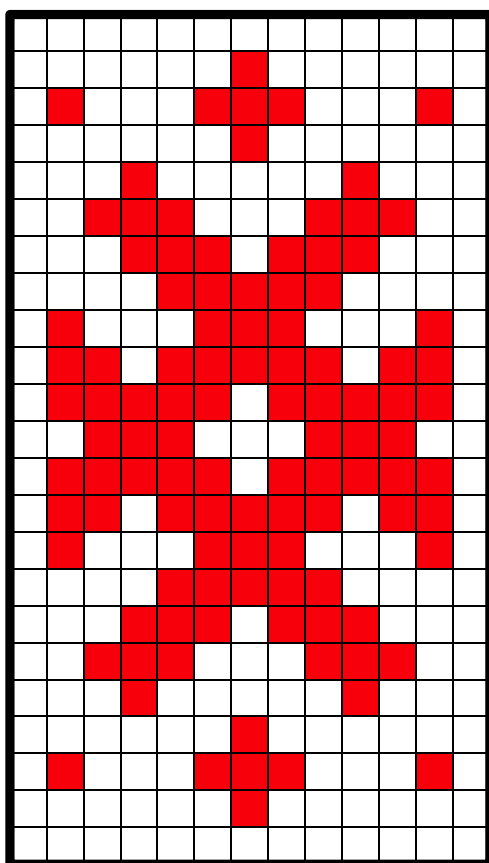


THREAD

White - BockensBomullsgarn 8/2

Rose - Cottolin 2/2

Weft is White



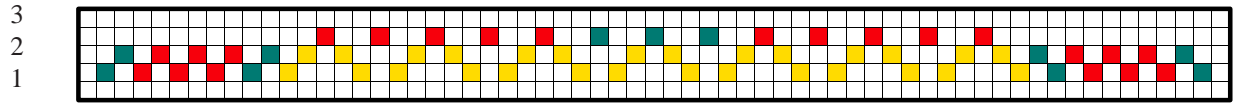
11

From a pattern by Heather Torgenrud

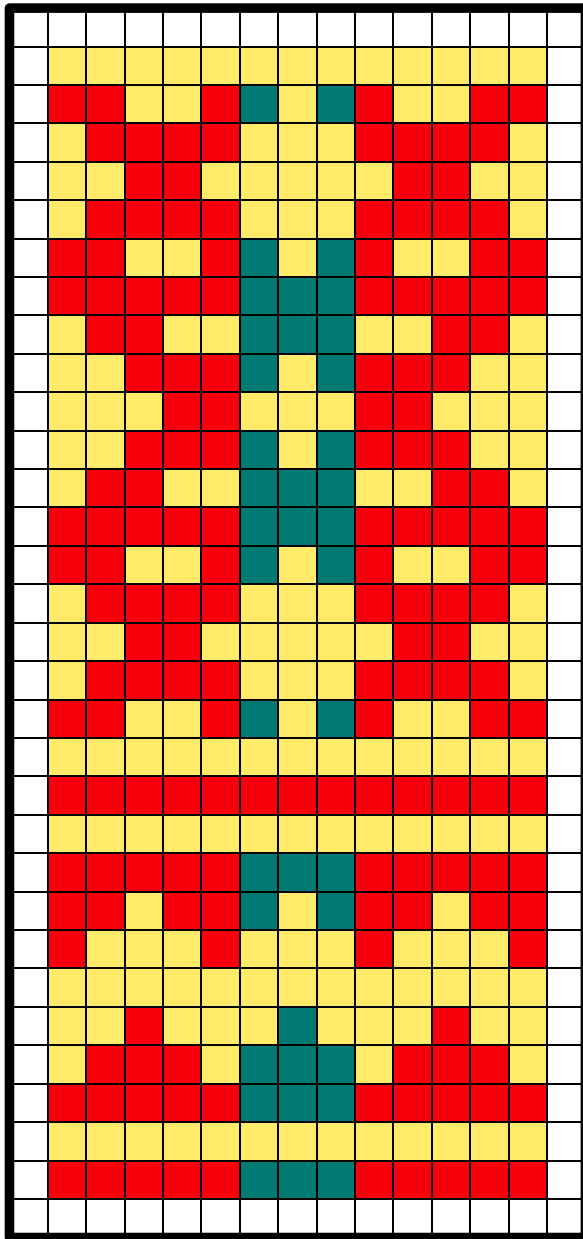


BALTIC PICK-UP BAND

BALTIC THREADING, SAMI BAND



The weft is Yellow



13



BALTIC PICK-UP BAND

MORA THREADING - DALARNA BAND, SWEDEN

THREADING

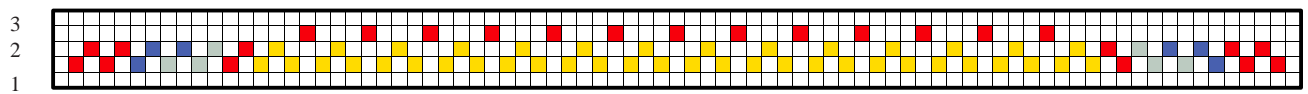
The base structure is another variation of basket weave. The background threads are on Shaft 1 and Shaft 2. For the Mora threading there are 3 background threads between each pattern thread.

The 13 pattern threads are double the thickness of the background threads and are in Shaft 3.

The colours are threaded according to the chart. The pattern threads will need to have separate tensioning.

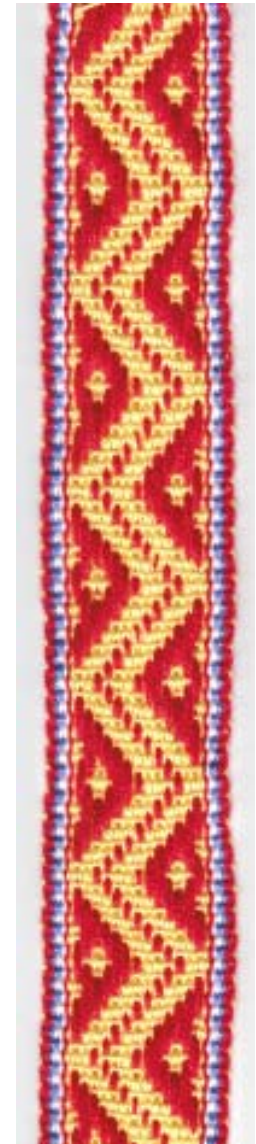
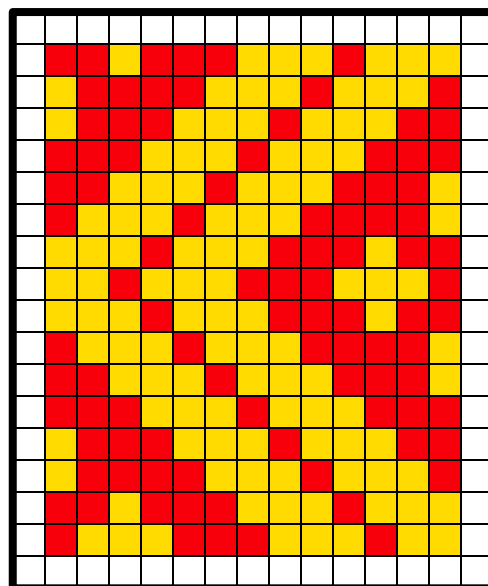
The weft is the same colour and thickness as for the background warps

The weft is the same colour and thickness as for the background warps.



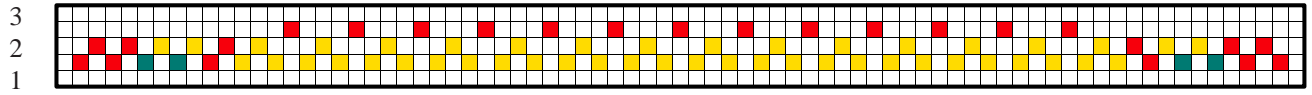
WEAVING

1. Raise Shaft 3 and beat gently. Pick up and drop down the pattern threads according to the chart. Hold the pattern threads on a stick then close Shaft 3. Raise Shaft 1 and push the pattern threads back toward the heddles. Pass the weft from Left to Right through Shaft 1 and the picked up pattern threads from Shaft 3.
2. Raise shaft 3. Beat then pick up and drop down the pattern threads for the next row on the chart. Hold the pattern threads then close Shaft 3. Raise Shaft 2 and push the pattern threads back toward the heddles. Pass the weft from Right to Left through Shaft 2 and the picked up pattern threads from Shaft 3. Before passing the weft make sure that all the dropped threads are pushed well down.

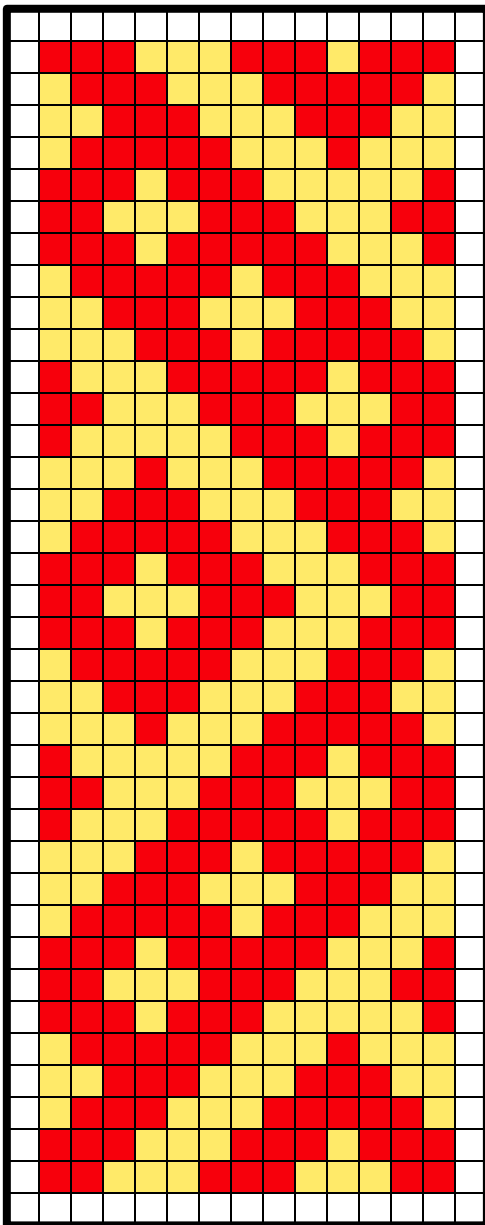


BALTIC PICK-UP BAND

MORA THREADING - LEKSAND BAND, SWEDEN



The weft is White



13

From a pattern by Susan Foulkes



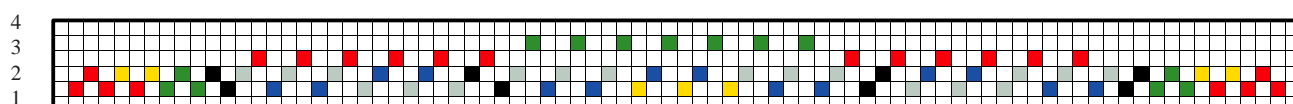
BALTIC PICK-UP BAND

SAMI BAND - SUPPLEMENTARY WARPS - 2 GROUPS

THREADING

The background colours for this band are threaded alternately on Shaft 1 and Shaft 2. The Red supplementary warps are threaded on Shaft 3 and the Green supplementary warps are threaded on Shaft 4.

The colours are threaded according to the chart.



WEAVING

The weft is Red

The pattern is worked ABA - CDC - repeat

Raise Shaft 4 and gently beat the Green supplementary warps. This will bring the supplementary warps to the surface and give a clear pattern line.

A - SHAFTS 1 and 4 Green supplementary warps on the surface
B - SHAFTS 2 and 4 “ “ “

Raise Shaft 3 and gently beat the Red supplementary warps.

C- SHAFTS 2 and 3 Red supplementary warps on the surface
D - SHAFTS 1 and 3 “ “ “



BALTIC PICK-UP BAND

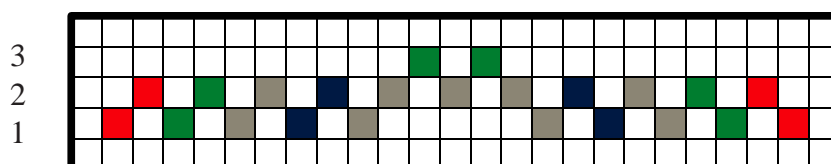
SUPPLEMENTARY WARP - LATVIAN FLOWER BAND 1

THREADING

The colours for this band are threaded alternately on Shaft 1 and Shaft 2.

The Green supplementary pattern threads are doubled and are threaded on Shaft 3.

The colours are threaded according to the chart.



WEAVING

The weft is Red

The pattern is worked BAB - DCD repeat

A - SHAFT 1

C - SHAFTS 2 and 3

B - SHAFT 2

D - SHAFTS 1 and 3

To begin work a few rows - Shaft 1 and Shaft 2 ending Shaft 2

1. Raise Shaft 3 and gently beat the supplementary warps. This will bring the supplementary warp to the surface and give a clear pattern line.

Raise Shaft 1 and 3 - weft Left to Right

2. Shafts 2 and 3 - weft Right to Left

3. Shafts 1 and 3 - weft Left to Right

4. Shaft 2 - weft Right to Left

5. Shaft 1 - weft Left to Right

6. Shaft 2 - weft Right to Left



