

# BALTIC PICK-UP BAND WEAVING

## ON A 4-SHAFT LOOM

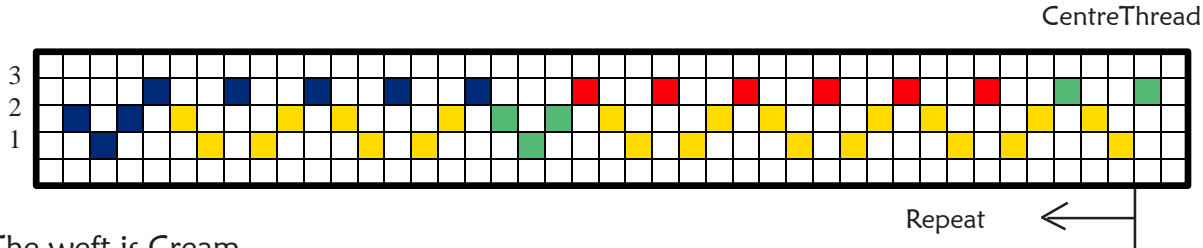


ELWYN KENN

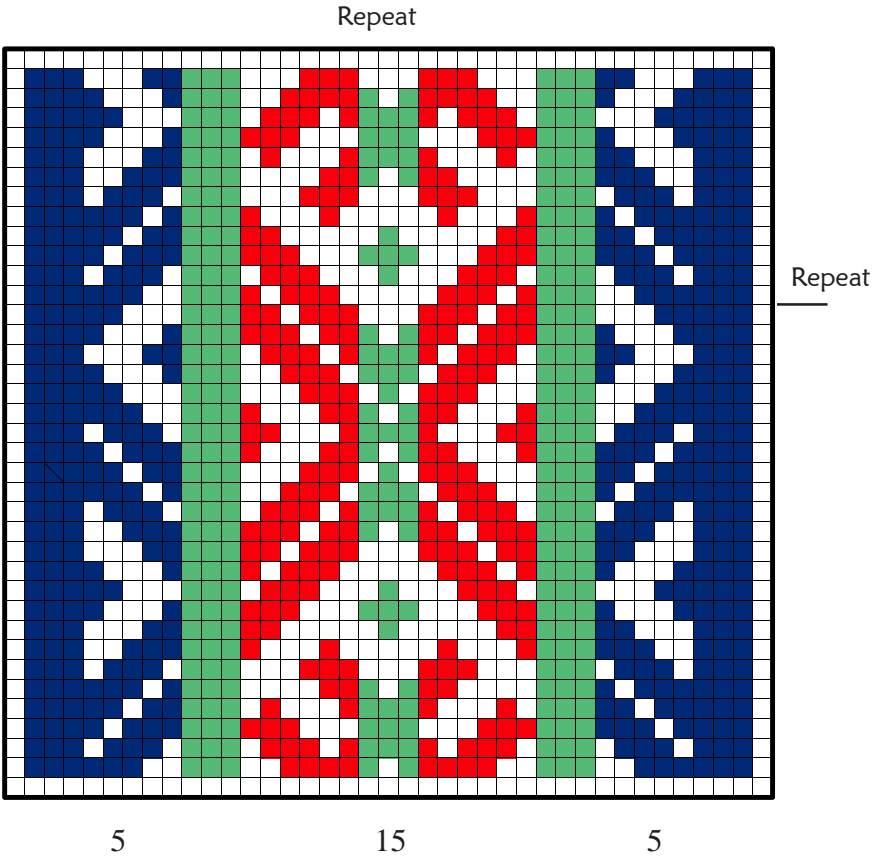


# BALTIC PICK-UP BAND

## BALTIC THREADING

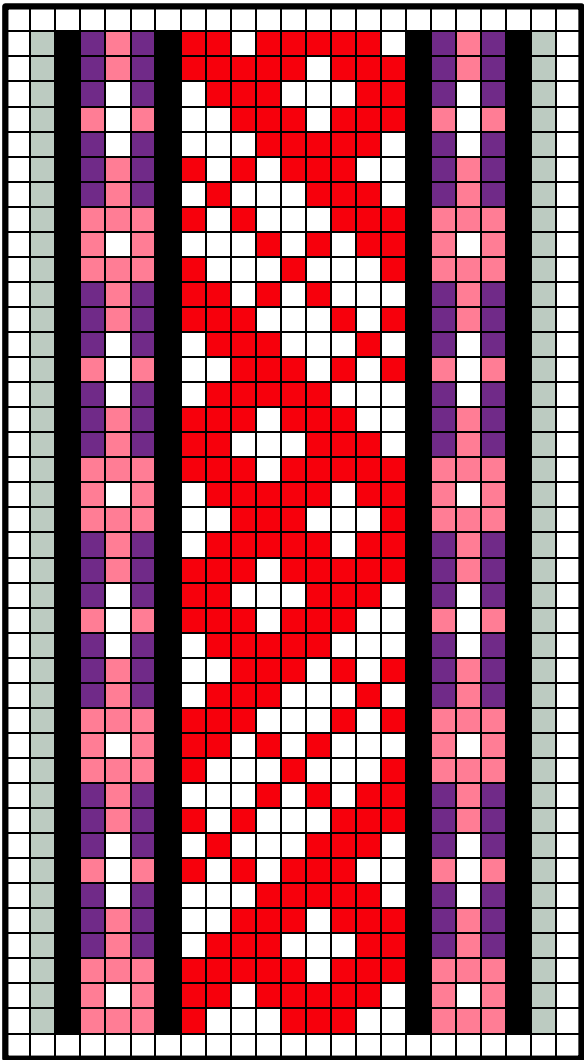
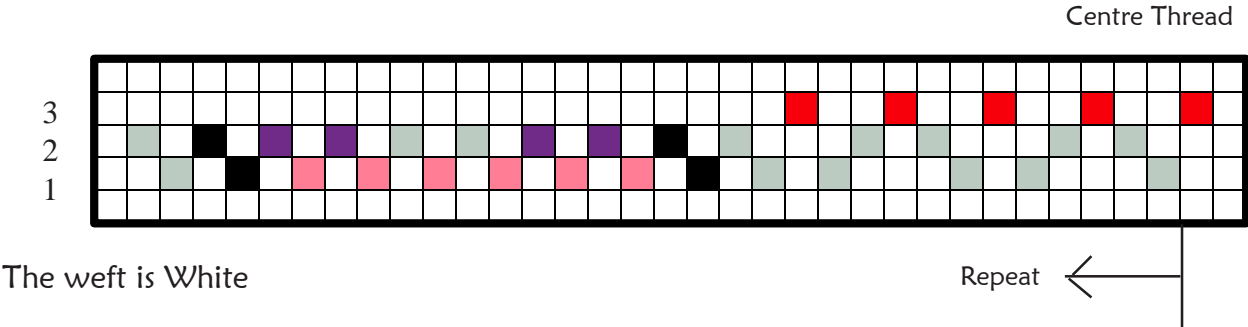


The weft is Cream



# BALTIC PICK-UP BAND

## BALTIC THREADING - NORWAY - APRON BAND



# BALTIC PICK-UP BAND

## BALTIC THREADING - NORWAY - APRON BAND

### BORDER WITH WARP FLOATS

#### TO WORK

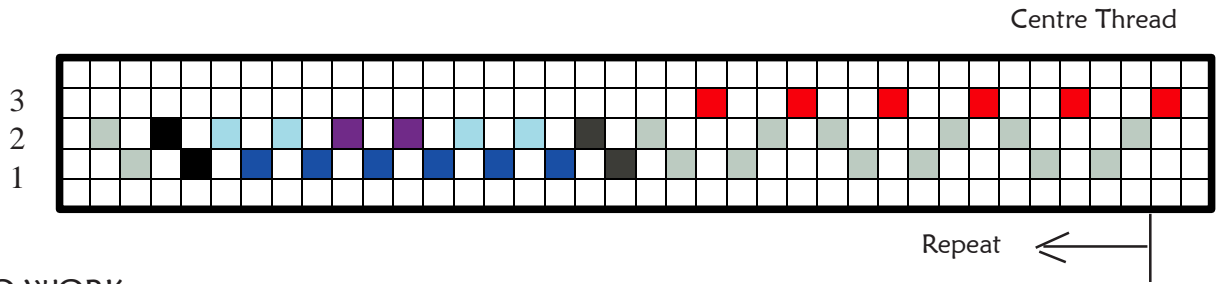
Pink, Purple and White borders using a pick-up stick for the borders and second stick for the pattern.

Begin pattern and borders on Shaft 1 as diagram.

1. Raise Shaft 3 and using a pick-up stick choose the pattern threads. Close Shaft 3. Raise Shaft 1 and push the picked up pattern threads back toward the heddles. Pass the weft through the shed. There is no need to pick up the border threads as Shaft 1 has the Pink border threads raised.
2. Raise Shaft 1. Pick up 2 Pink, drop 2 Pink, pick up 2 Pink threads from both borders. Close Shaft 1. Raise Shaft 3 and using a second stick pick up the pattern threads. Close Shaft 3. Raise Shaft 2 and push both sticks back toward the heddles and pass the weft through the shed.
3. Shaft 3 and pick up pattern. Close Shaft 3. Raise Shaft 1 and push back toward the heddles. Pass the weft through the shed.
4. Raise Shaft 1. Pick up the centre 2 Pink threads of both borders. Close Shaft 1. Shaft 3 and pick up the pattern. Close Shaft 3. Raise Shaft 2, push back, pass the weft.
5. Shaft 2, pick up Purple threads, 2 Purple, drop 2 White, 2 Purple from each border. Shaft 3, pick up pattern. Close Shaft 3. Shaft 1, push back, pass the weft.
6. Shaft 3, pick up pattern. Close Shaft 3. Shaft 2 push back, pass weft.
7. Shaft 2, pick up 2 White from each border. Shaft 3, pick up pattern. Shaft 1, push back, pass weft.
8. Shaft 3, pick up pattern. Shaft 2, push back, pass weft
9. Shaft 2, pick up the 4 Purple threads from each border. Shaft 3, pick up pattern. Shaft 1, push back, pass weft.
10. Shaft 1, pick up centre 2 Pink from each border. Shaft 3, pick up pattern . Shaft 2, push back, pass weft.

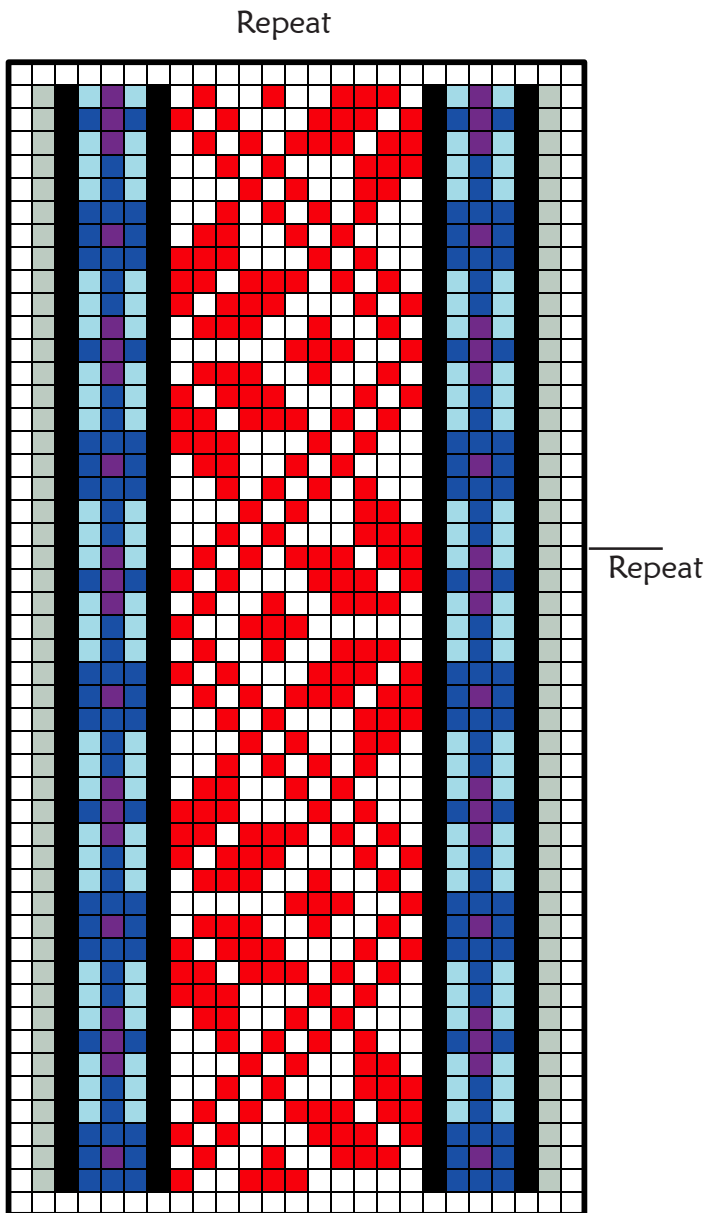
# BALTIC PICK-UP BAND

## BALTIC THREADING - NORWAY - APRON BAND



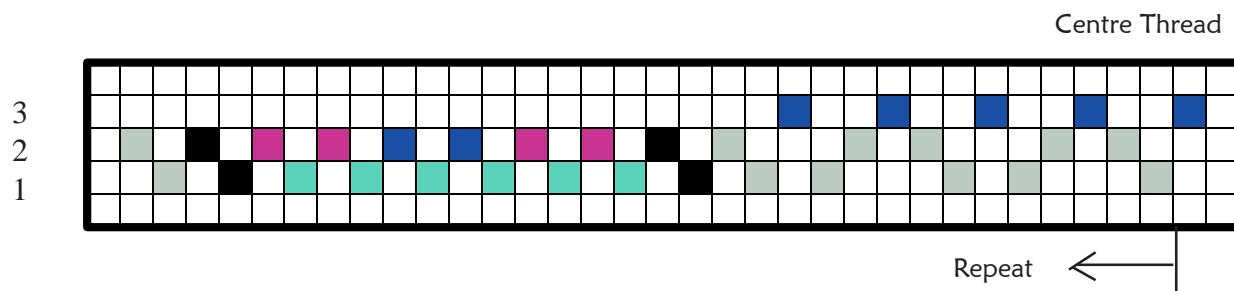
### TO WORK

Work as for the band with Pink, Purple and White borders. Substitute Blue for the Pink, Pale Blue for the Purple and Purple for the White threads. The weft is White.



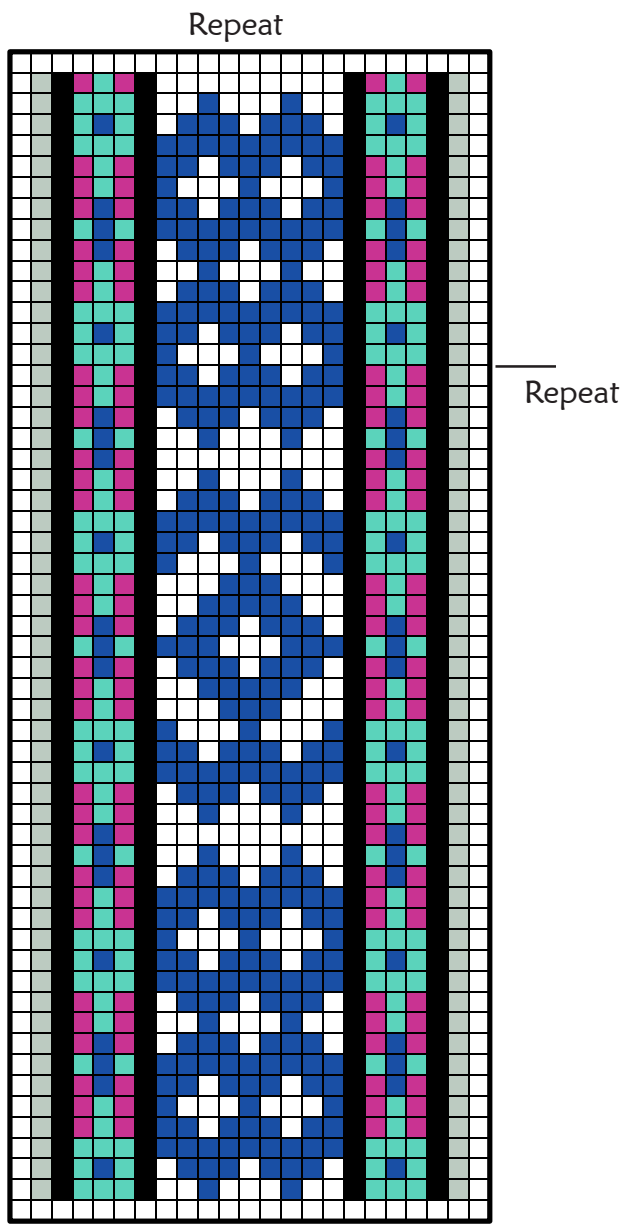
# BALTIC PICK-UP BAND

## BALTIC THREADING - NORWAY - APRON BAND



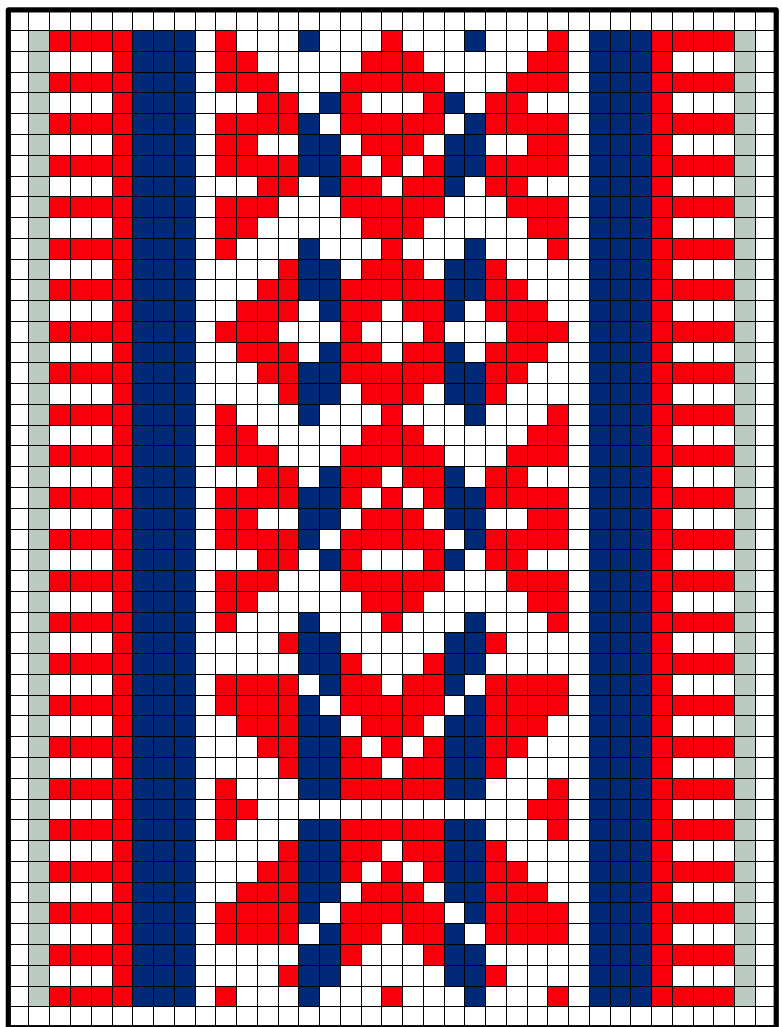
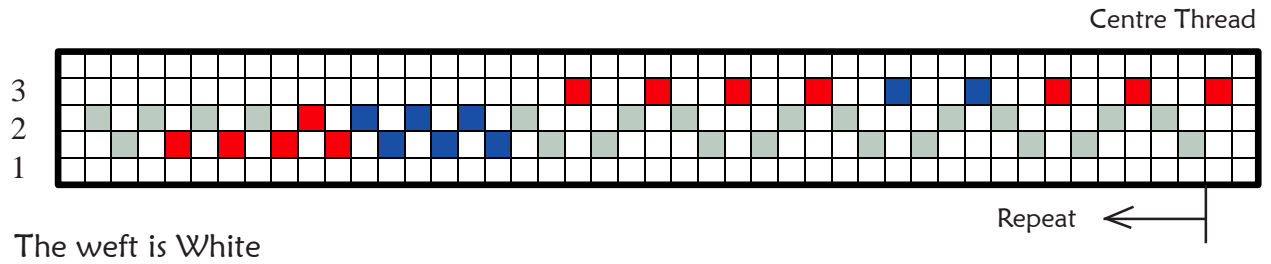
### TO WORK

Work as for band with Pink, Purple and White borders. Substitute Pale Blue for Pink, Purple for Purple and Mid Blue for White. The weft is White



# BALTIC PICK-UP BAND

BALTIC THREADING - NORWAY - SAMI WOMAN'S HEADBAND

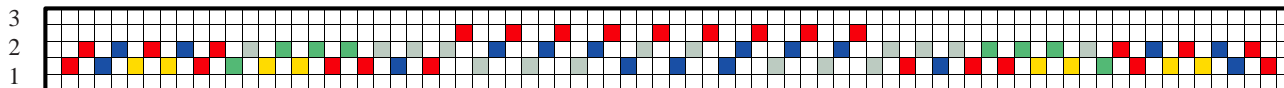






# BALTIC PICK-UP BAND

## BALTIC THREADING - NORWAY - SAMI WOMAN'S BELT



### WEAVING

The weft is Red

The pattern is worked ABA - CDC - repeat

A - Shaft 1

C - Shafts 2 and 3

B - Shaft 2

D - Shafts 1 and 3

The colours for the threading

Red

Blue

White

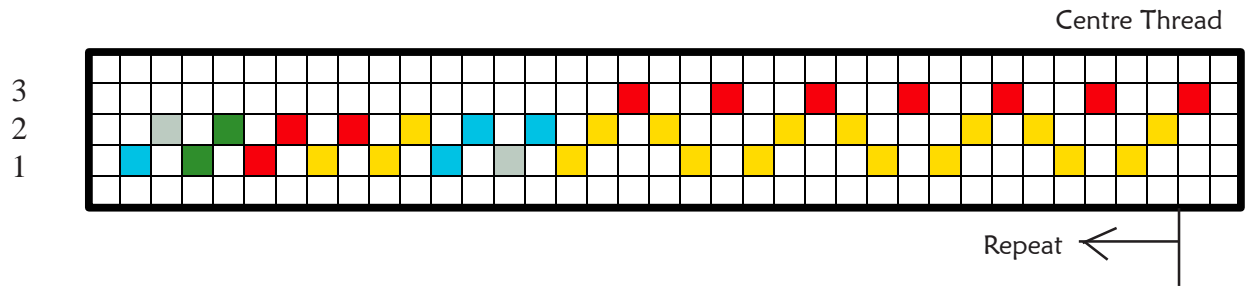
Green

Yellow

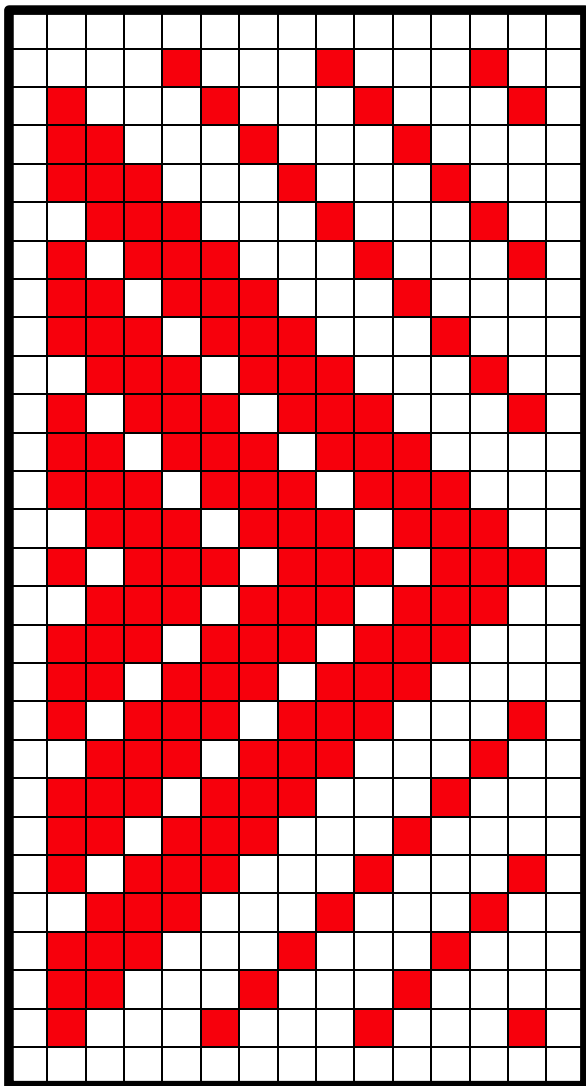


# BALTIC PICK-UP BAND

## BALTIC THREADING - FINLAND - SAMI BAND

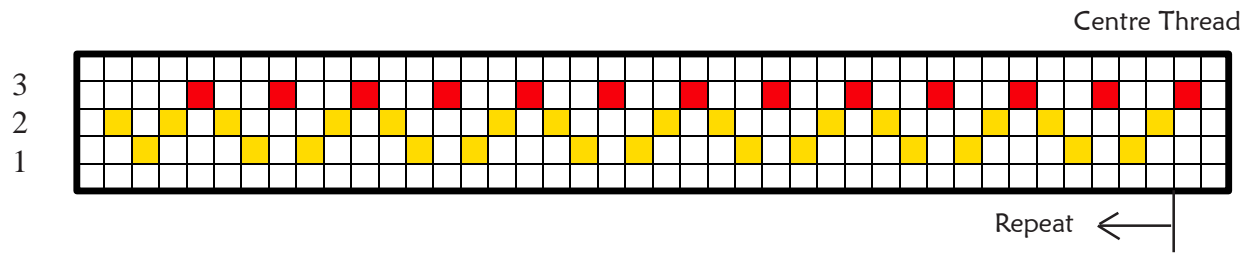


The weft is Yellow

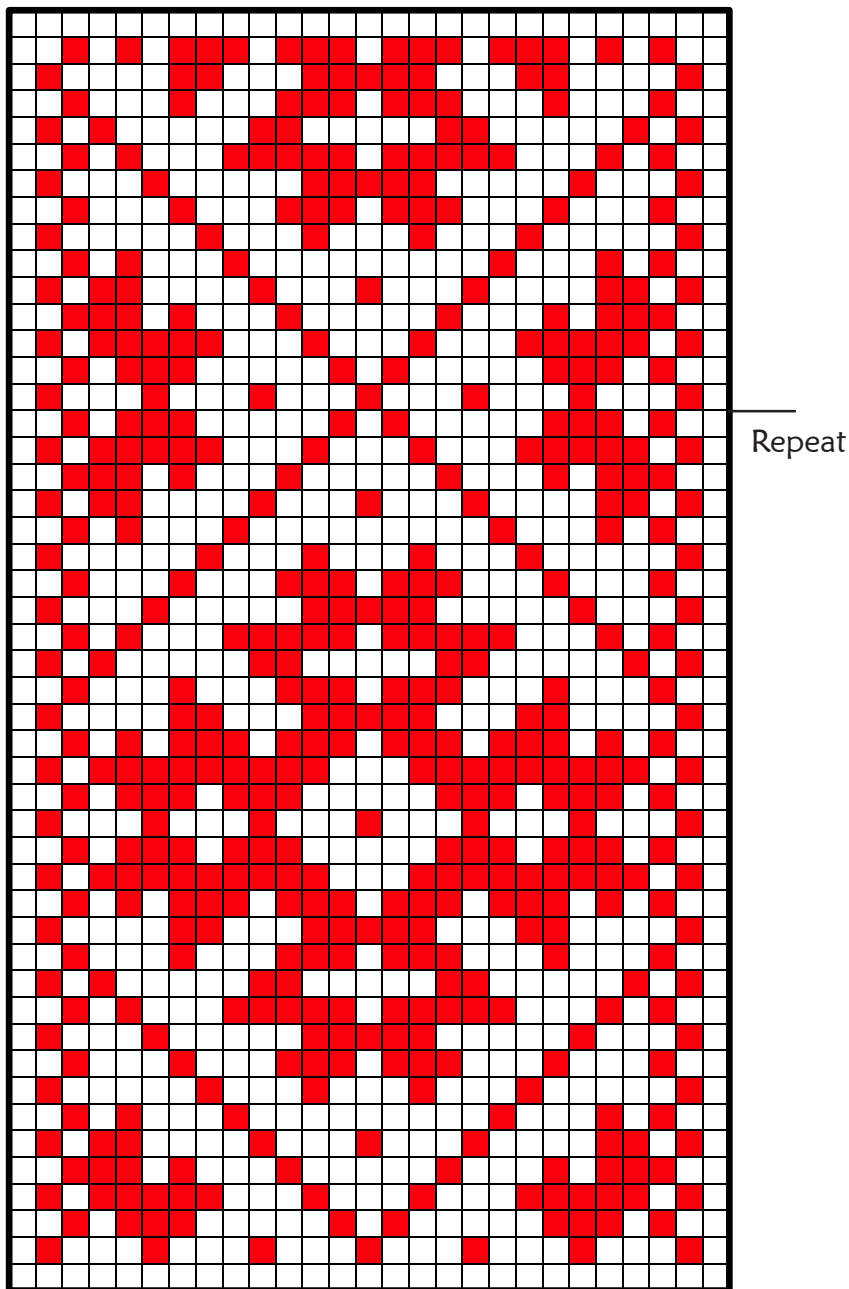


# BALTIC PICK-UP BAND

## BALTIC THREADING - ESTONIA

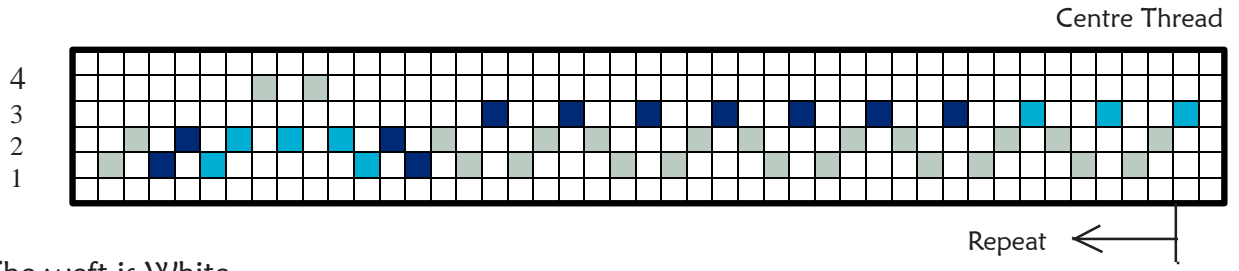


The weft is Cream

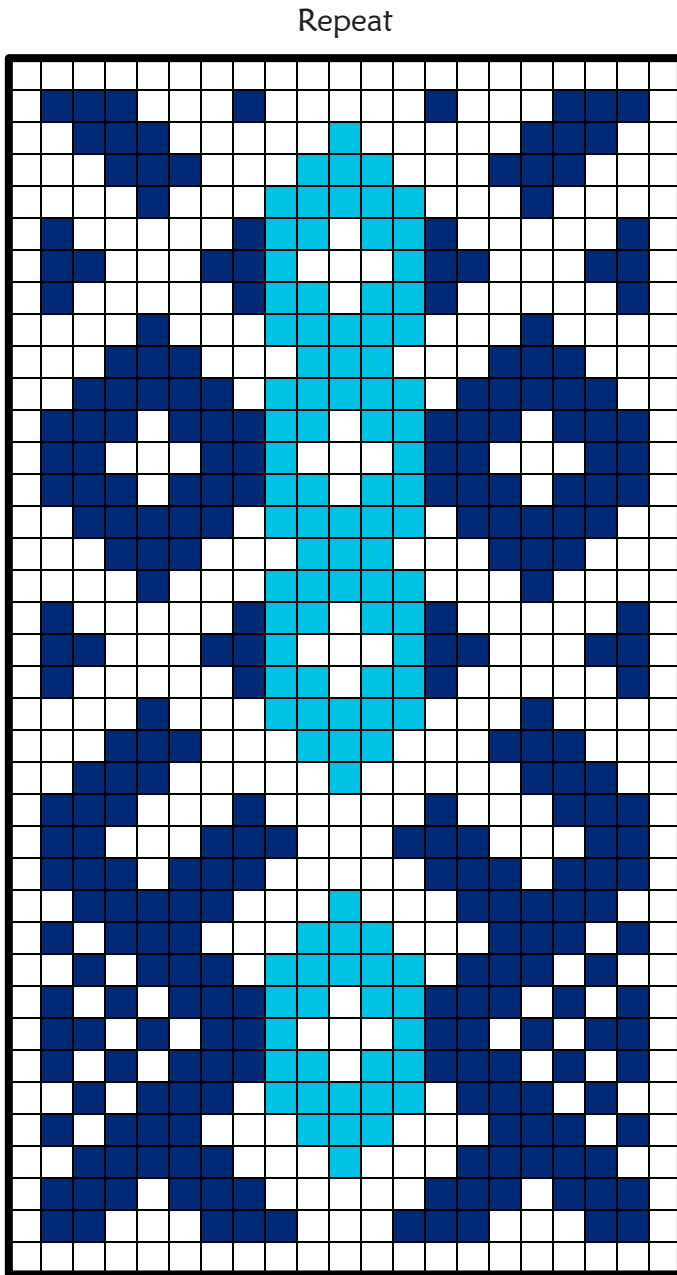


# BALTIC PICK-UP BAND

## BALTIC THREADING



The weft is White



# BALTIC PICK-UP BAND

## BALTIC THREADING

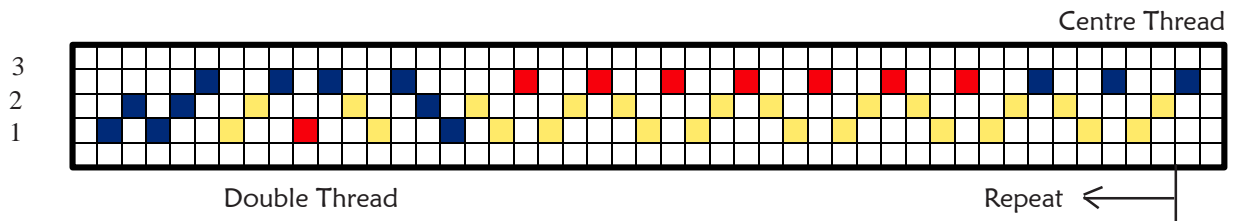
### TO WORK THE FLOWER BORDER

Start the pattern on row 2 to begin the flower border.

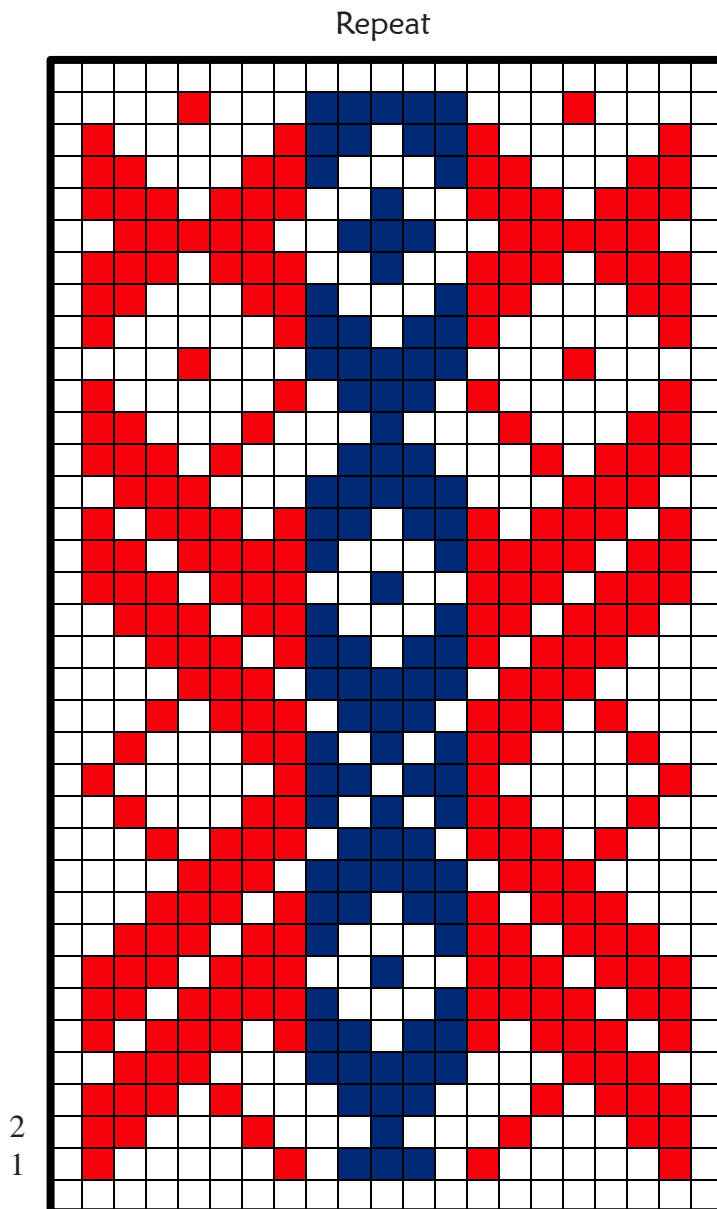
1. Row 2 on pattern. Raise Shaft 3, pick up the pattern threads. Raise Shaft 2 and push the pattern threads back toward the heddles. Close Shaft 3. Pass the weft from Right to Left.
2. Raise Shaft 3, pick up the pattern threads. Raise Shaft 1 and push threads back. Close Shaft 3. Pass weft from Left to Right.
3. Shaft 3, pick up pattern threads. Shaft 2 and push back. Pass weft from Right to Left.
4. Shafts 3 and 4, pick up pattern threads including the border pattern threads, Shaft 1 and push back, weft from Left to Right.
5. Shafts 3 and 4, pick up pattern threads including the border, Shaft 2, push back, weft from Right to Left.
6. Shafts 3 and 4, pick up including the border, Shaft 1, push back, weft from Left to Right

# BALTIC PICK-UP BAND

BALTIC THREADING - ADAPTED FROM A DESIGN FROM ESTONIA



The weft is Cream



# BALTIC PICK-UP BAND

## BALTIC THREADING - ESTONIA

### TO WORK THE BORDER

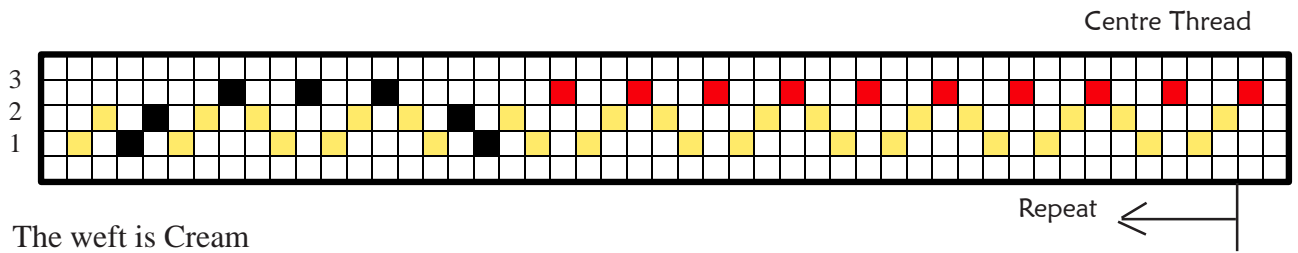
Begin on row 2 of the chart to start the flower borders.

1. Raise Shaft 3. Pick up the pattern threads (not the borders). Raise Shaft 2 and push the pattern threads back toward the heddles. Close Shaft 3. Pass the weft from Right to Left.
2. Raise Shaft 3. Pick up the pattern threads (not the borders). Raise Shaft 1, push back. Close Shaft 3. Weft from Left to Right.
3. Shaft 3. Pick up (not the borders). Shaft 2, push back. Close Shaft 3. Weft from Right to Left.
4. Shaft 3. Pick up pattern threads and the borders. Shaft 1, push back. Close Shaft 3. Weft from Left to Right.
5. Shaft 3, pattern threads and borders. Shaft 2, push back. Close Shaft 3. Weft from Right to Left.
6. Shaft 3, pattern threads and borders, Shaft 1, push back, Weft from Left to Right.



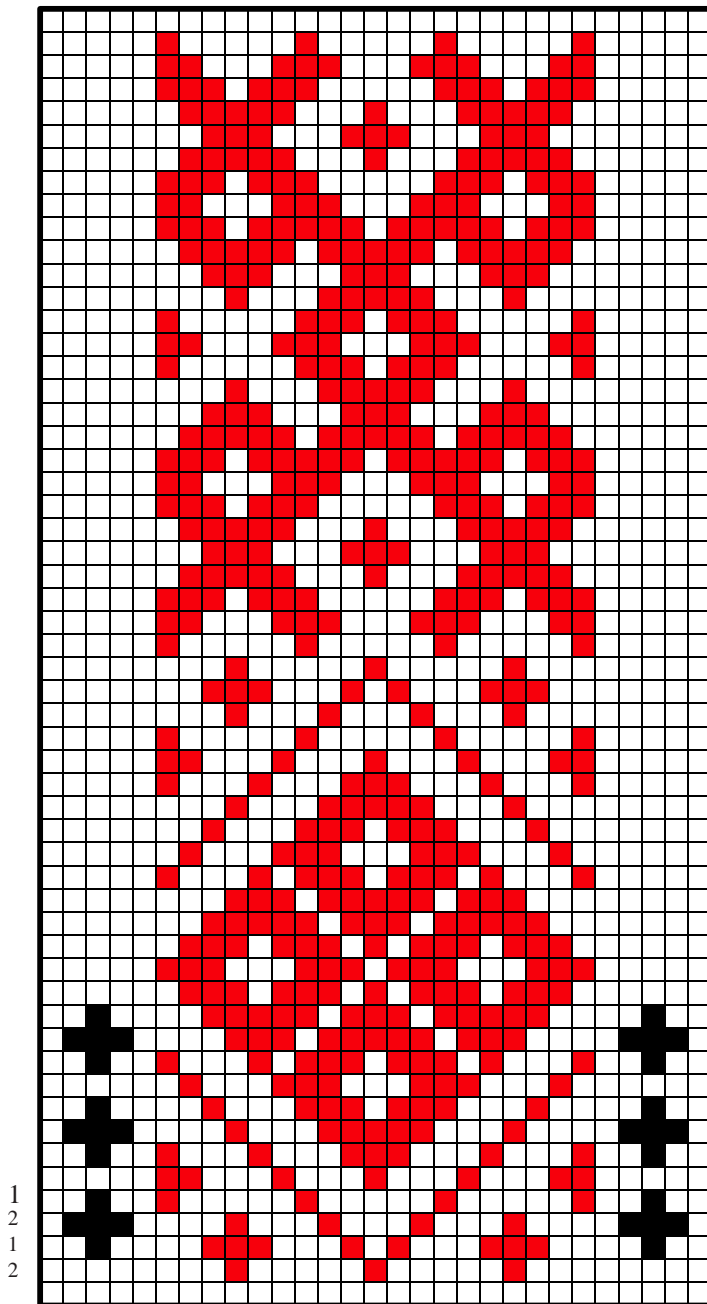
# BALTIC PICK-UP BAND

## BALTIC THREADING



The weft is Cream

Repeat



1  
2  
1  
2

3

19

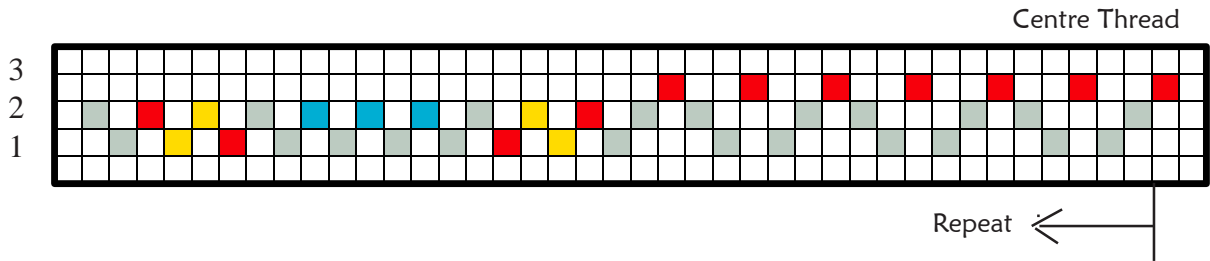
3



Begin the Diamond Border on Row 2 with a background thread. For the first row of the pattern the weft is from Right to Left. There are 4 rows in the border.

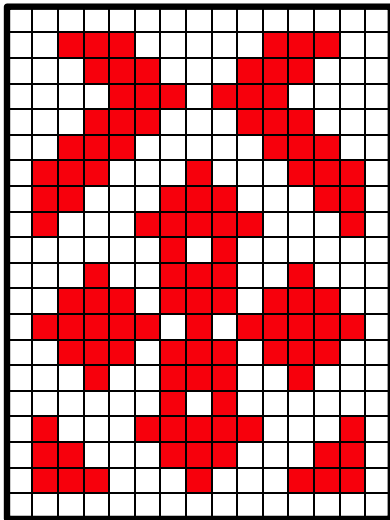
# BALTIC PICK-UP BAND

BALTIC THREADING - ESTONIA  
 FROM A BOOK BY PIIA RAND - ESTI KIRIVOOD



The weft is DMC Perle No 12 - Blanc

Repeat

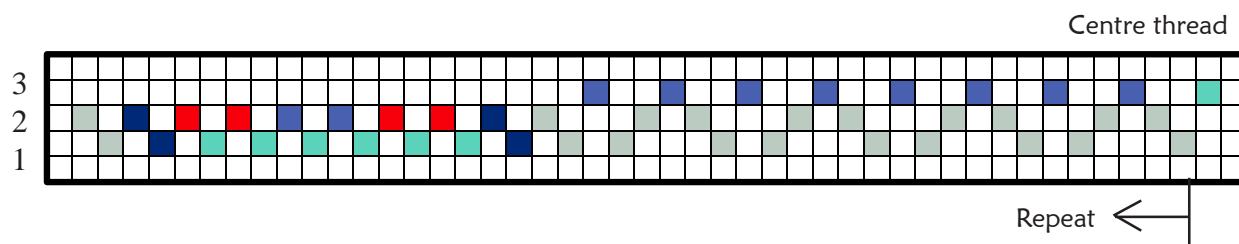


9



# BALTIC PICK-UP BAND

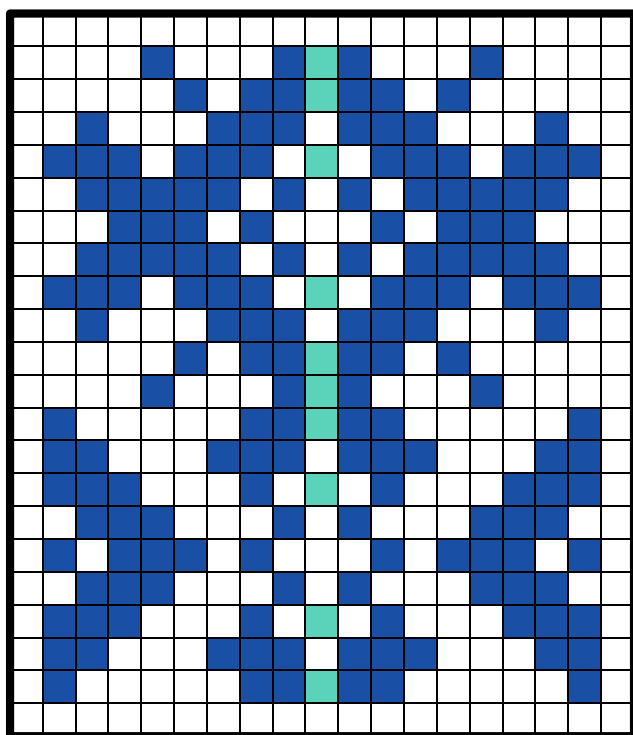
## BALTIC THREADING - NORWAY



### TO WORK

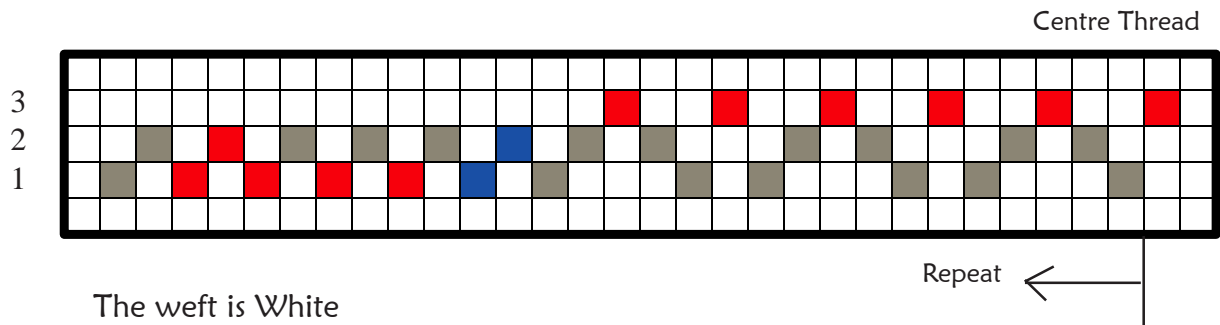
Work as for band with Pink, Purple and White borders. Substitute Pale Blue for Pink, Purple for Purple and Mid Blue for White. The weft is White

Repeat

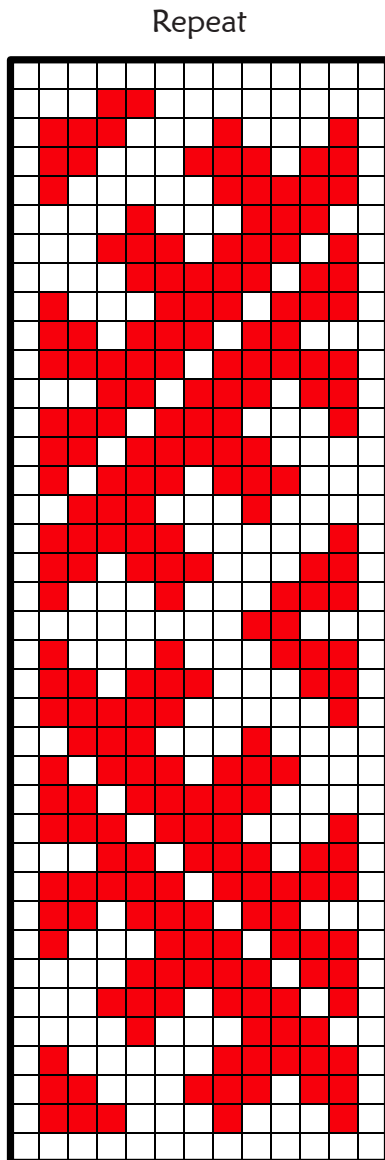


# BALTIC PICK-UP BAND

## BALTIC THREADING - LATVIA

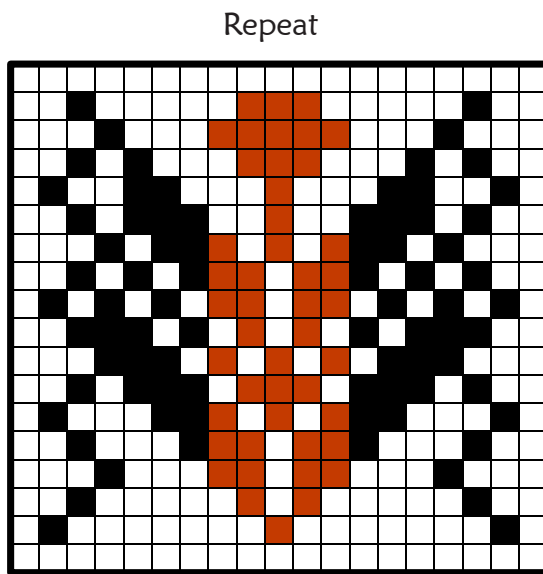
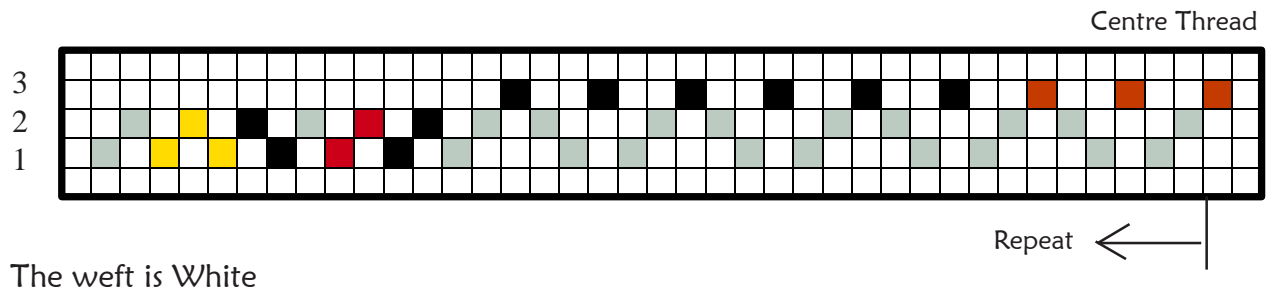


The weft is White



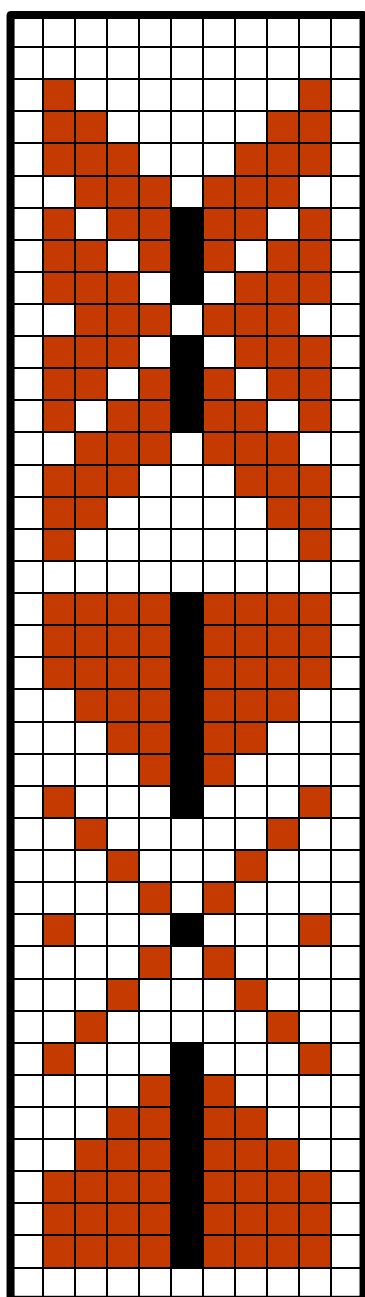
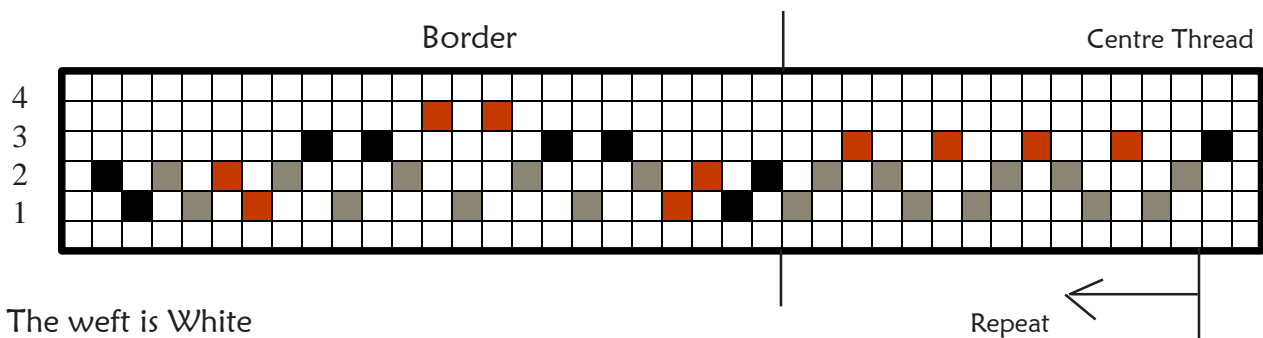
# BALTIC PICK-UP BAND

## BALTIC THREADING - LITHUANIA



# BALTIC PICK-UP BAND

## BALTIC THREADING - ESTONIA



Repeat



# BALTIC PICK-UP BAND

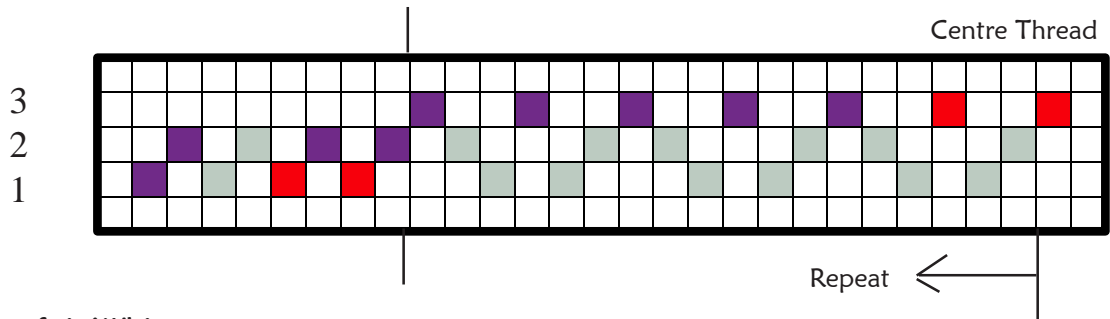
## BALTIC THREADING

### TO WORK THE BORDER

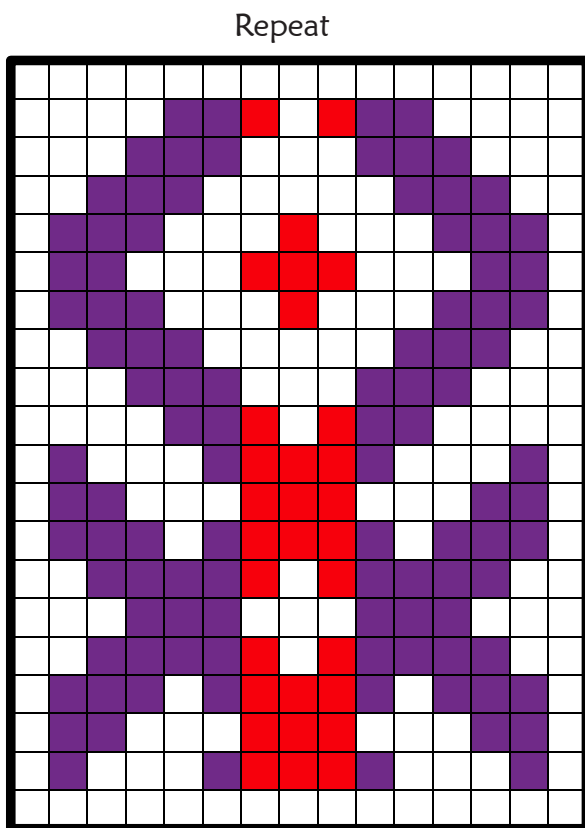
1. Raise Shaft 3, pick up pattern (not borders). Raise Shaft 1 and push back the pattern threads back toward the heddles. Close Shaft 3. Pass the weft from Left to Right.
2. Shafts 3 & 4 -pick up 2 Tan pattern threads from borders and the pattern. Shaft 2, push back. Weft from Right to Left.
3. As row 1. Weft Left to Right.
4. Shafts 2,3,4. Pick up pattern from Shaft 3 and borders 3&4. Push back. Weft from Right to Left.
5. As row 1. Left to Right.
6. As row 2. Right to Left.
7. As row 1. Left to Right.
8. Shaft 3&4. Pick up borders and pattern. Shaft 2. Weft from Right to Left.
9. Shaft 3&4 . Pick up borders and pattern. Shaft 1. Weft from Left to Right.
10. As row 8. Right to Left.
11. Shaft 3 (not borders). As row 1.
12. As row 8.
13. As row 9.
14. As row 8..

# BALTIC PICK-UP BAND

## BALTIC THREADING - RUSSIA



The weft is White



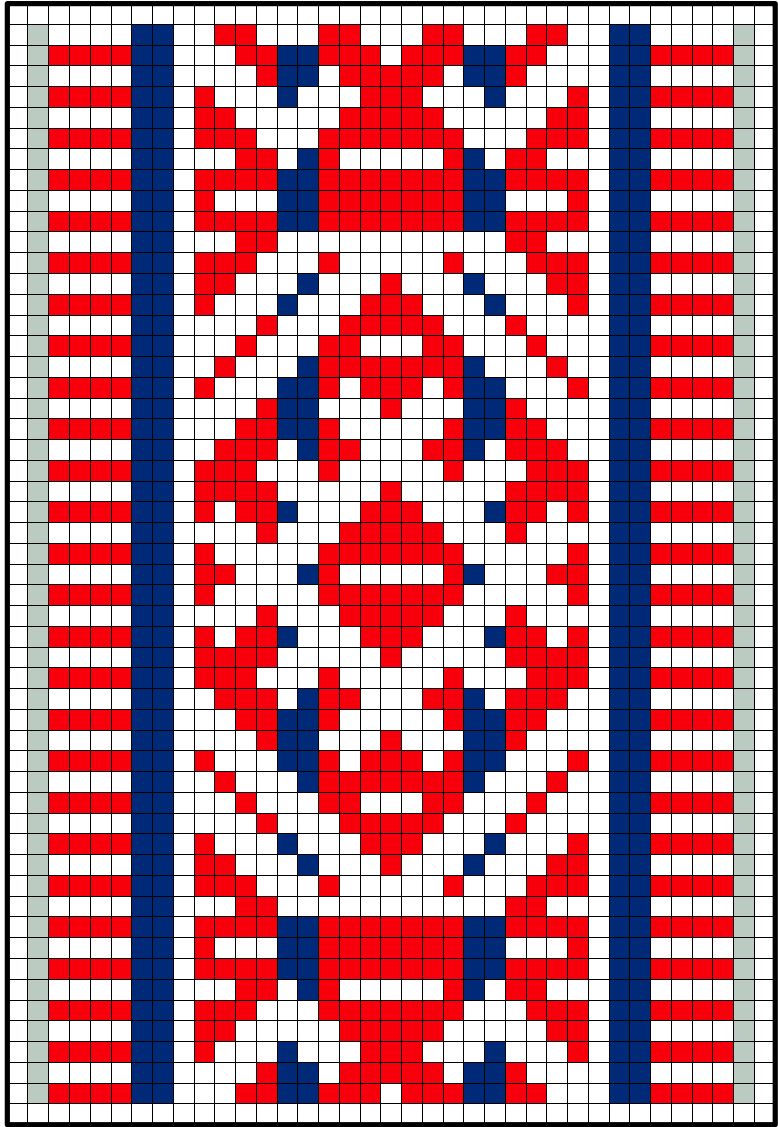
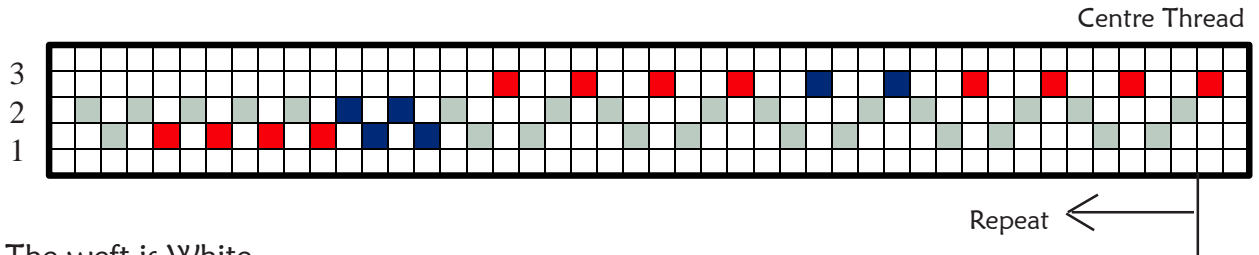
13





# BALTIC PICK-UP BAND

## BALTIC THREADING - NORWAY - SAMI MAN'S HEADBAND



# BALTIC PICK-UP BAND

## BALTIC THREADING - ESTONIA

